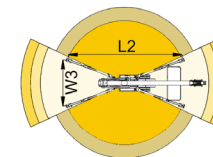
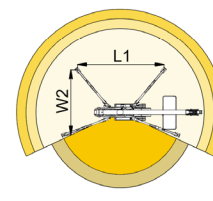
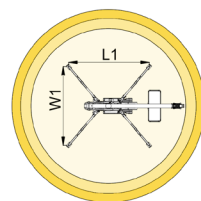
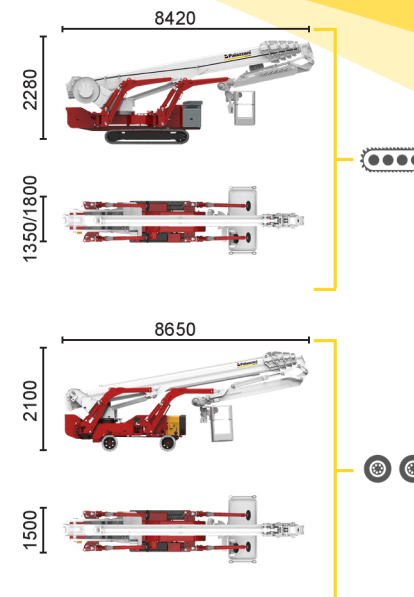
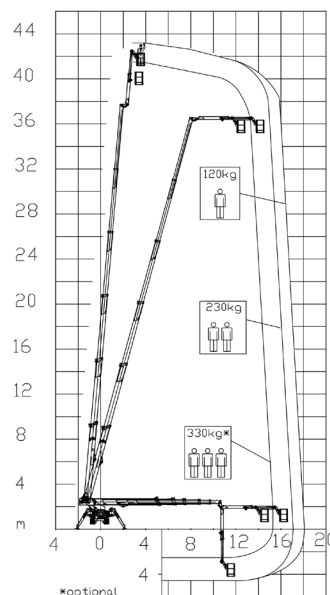
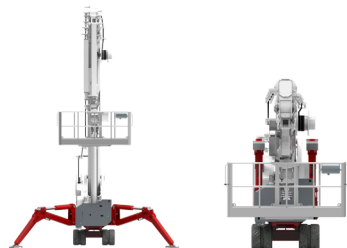



**BI-ENERGY**

 Diesel  
32,5 kW

 Single-phase  
Electric motor  
230VAC - 2,2 kW


15,2 m	17 m	18 m	11,8 m	13,5 m	L1	L2	W1	W2	W3
330* kg	230 kg	120 kg	330* kg	120/230 kg	5945 mm	7095 mm	5230 mm	4435 mm	3640 mm



XTJ 43+/C	XTJ 43+/R	43 m	18 m	330 kg*	660°	240x70 cm	90°+80°	3,64-5,23 m	23%	38%	2 km/h	10900 kg	75 kN	3,51 kN/m <sup>2</sup>	5,39 kN/m <sup>2</sup>
		43 m	18 m	330 kg*	660°	240x70 cm	90°+80°	3,64-5,23 m	23%	16%	1,4 km/h	10900 kg	75 kN	3,51 kN/m <sup>2</sup>	5,25 kN/m <sup>2</sup>

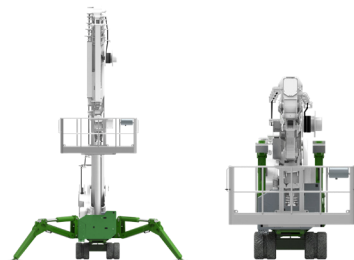
Available power options:

**BI-ENERGY** (DIESEL+AC)

 **ECO** (AC+BATTERY)


Characteristics and technical data are informative only and subjected to change without notice.

**FILIALE MISSAGLIA:** Via I° Maggio, 25 - 23873 Missaglia (LC) - Tel: +39 039 92.011.61 - Tel: +39 039 92.011.62  
**FILIALE SESTO SAN GIOVANNI:** Via G. di Vittorio, 338 - 20099 Sesto San Giovanni (MI) - Tel: +39 02 26224081  
 INFO LINE: 800.900.061




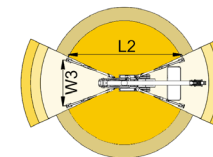
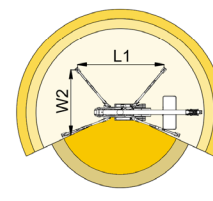
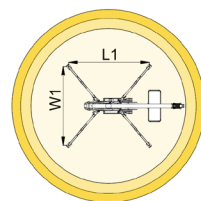
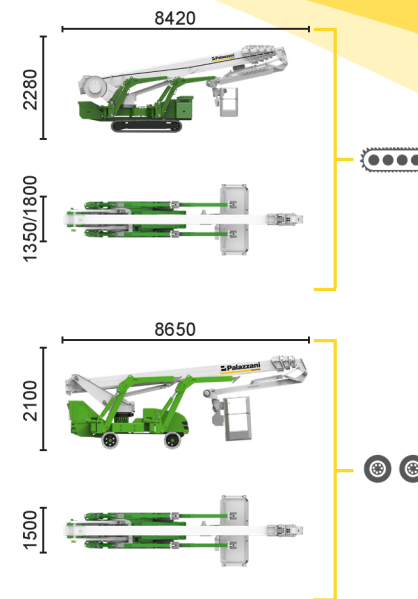
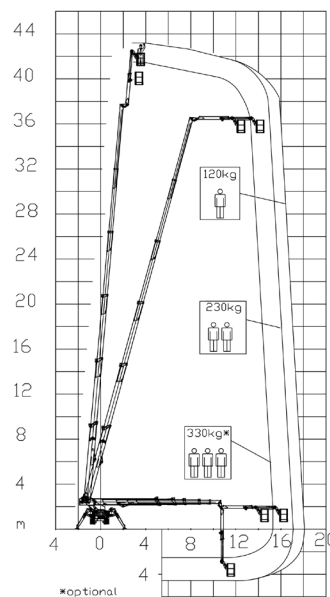
**ECO**

---


 Single-phase  
Electric motor



---


 Lithium iron  
phosphate battery  
LiFePO4



15,2 m	17 m	18 m	11,8 m	13,5 m	L1	L2	W1	W2	W3
330* kg	230 kg	120 kg	330* kg	120/230 kg	5945 mm	7095 mm	5230 mm	4435 mm	3640 mm



XTJ 43+/C		43 m	18 m	330 kg*	660°	240x70 cm	90°+80°	3,64-5,23 m	23%	38%	2 km/h	10900 kg	75 kN	3,51 kN/m <sup>2</sup>	5,39 kN/m <sup>2</sup>
XTJ 43+/R		43 m	18 m	330 kg*	660°	240x70 cm	90°+80°	3,64-5,23 m	23%	16%	1,4 km/h	10900 kg	75 kN	3,51 kN/m <sup>2</sup>	5,25 kN/m <sup>2</sup>

Available power options:

**BI-ENERGY** (DIESEL+AC)

**ECO** (AC+BATTERY)

Characteristics and technical data are informative only and subjected to change without notice.

**FILIALE MISSAGLIA:** Via I° Maggio, 25 - 23873 Missaglia (LC) - Tel: +39 039 92.011.61 - Tel: +39 039 92.011.62  
**FILIALE SESTO SAN GIOVANNI:** Via G. di Vittorio, 338 - 20099 Sesto San Giovanni (MI) - Tel: +39 02 26224081  
 INFO LINE: 800.900.061