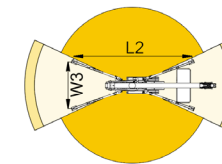
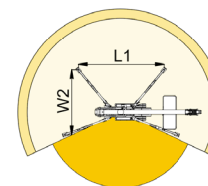
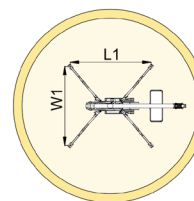
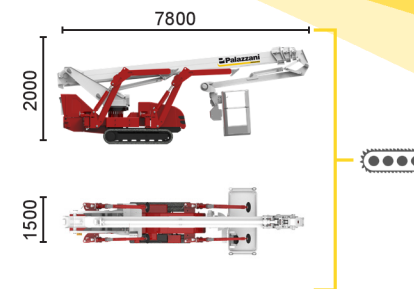
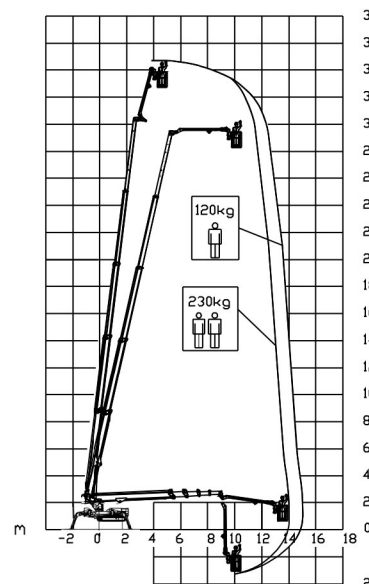
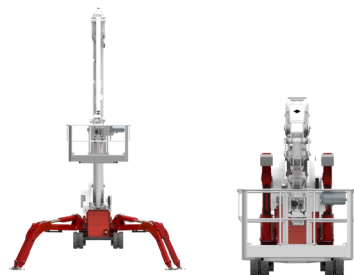




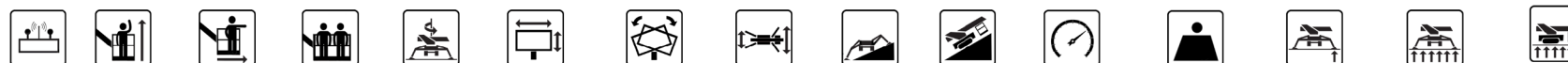
BI-ENERGY

Diesel
18,2 kW

Single-phase
Electric motor
230VAC - 3 kW



14 m	15 m	8,5 m	L1	L2	W1	W2	W3
230 kg	120 kg	230/120 kg	5535 mm	7160 mm	5260 mm	3975 mm	2680 mm



TSJ 35.1/C 35 m 15 m 230 kg 660° 180x70 cm 90°+80° 2,68-5,26 m 23% 36% 1,8 km/h 7100 kg 47 kN 2,44 kN/m² 5,06 kN/m²

Available version:

BI-ENERGY (DIESEL+AC)

ECO (AC+BATTERY)

Characteristics and technical data are informative only and subjected to change without notice.

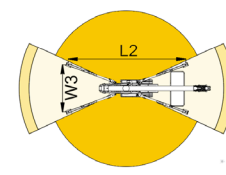
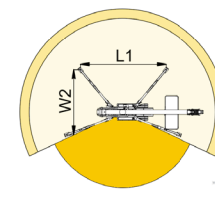
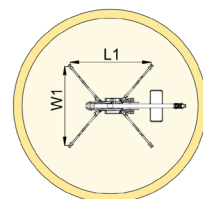
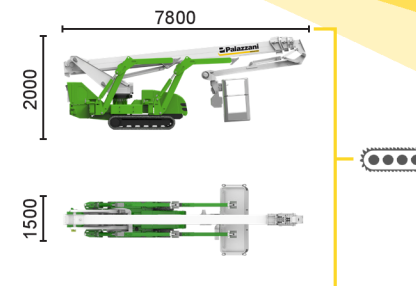
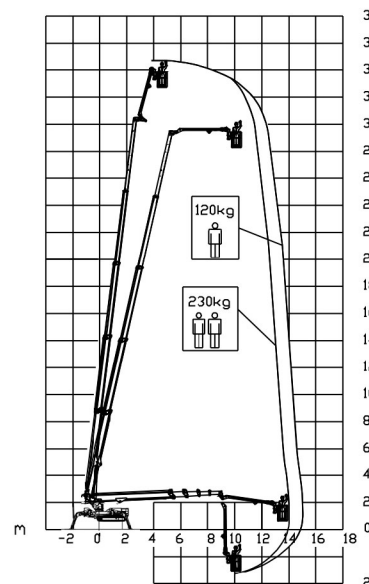
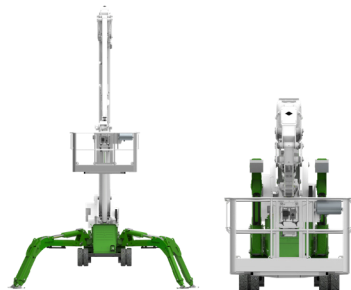
FILIALE MISSAGLIA: Via I° Maggio, 25 - 23873 Missaglia (LC) - Tel: +39 039 92.011.61 - Tel: +39 039 92.011.62
FILIALE SESTO SAN GIOVANNI: Via G. di Vittorio, 338 - 20099 Sesto San Giovanni (MI) - Tel: +39 02 26224081
 INFO LINE: 800.900.061



ECO

Single-phase
Electric motor

Lithium iron
phosphate battery
LiFePO4



14 m	15 m	8,5 m	L1	L2	W1	W2	W3
230 kg	120 kg	230/120 kg	5535 mm	7160 mm	5260 mm	3975 mm	2680 mm



TSJ 35.1/C 35 m 15 m 230 kg 660° 180x70 cm 90°+80° 2,68-5,26 m 23% 36% 1,8 km/h 7100 kg 47 kN 2,44 kN/m2 5,06 kN/m2

Available version:

BI-ENERGY (DIESEL+AC)

ECO (AC+BATTERY)

Characteristics and technical data are informative only and subjected to change without notice.

FILIALE MISSAGLIA: Via I° Maggio, 25 - 23873 Missaglia (LC) - Tel: +39 039 92.011.61 - Tel: +39 039 92.011.62
FILIALE SESTO SAN GIOVANNI: Via G. di Vittorio, 338 - 20099 Sesto San Giovanni (MI) - Tel: +39 02 26224081
 INFO LINE: 800.900.061