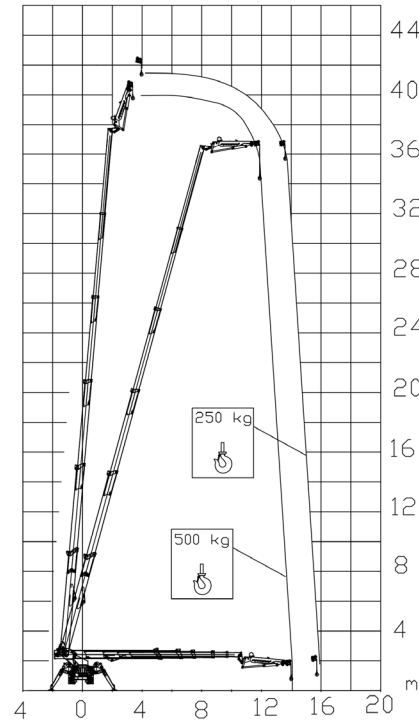




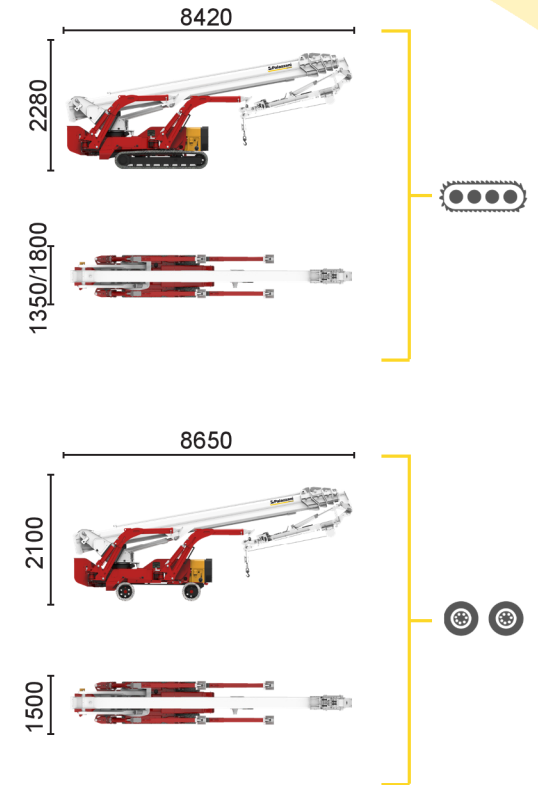
## BI-ENERGY

Diesel  
32,5 kW

Single-phase  
Electric motor  
230VAC - 2,2 kW



500 kg	250 kg
13,5 m	15,2 m



Model	Icon 1	Reach (m)	Height (m)	Capacity (kg)	Rotation (°)	Dimensions (cm)	Extension (m)	Capacity (%)	Capacity (%)	Speed (km/h)	Weight (kg)	Capacity (kN)	Capacity (kN/m²)	Capacity (kN/m²)
XTJ 43+/C		41,7	15,2	500	660°	240x70	3,64-5,23	23%	38%	2	10900	75	3,51	5,39
XTJ 43+/R		41,7	15,2	500	660°	240x70	3,64-5,23	23%	16%	1,4	10900	75	3,51	5,25

Available power options:

**BI-ENERGY** (DIESEL+AC)

**ECO** (AC+BATTERY)

Characteristics and technical data are informative only and subjected to change without notice.



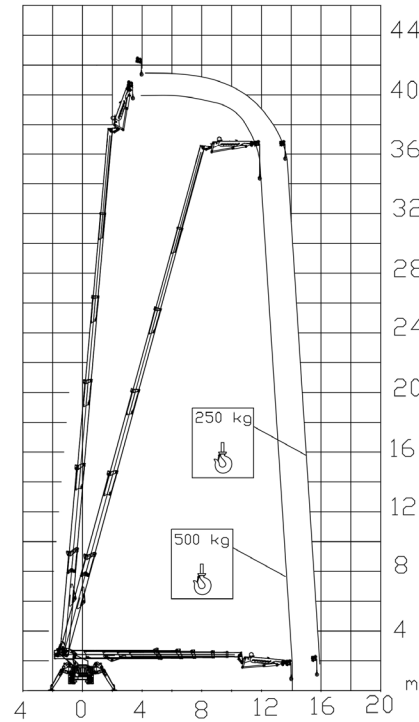
**ECO**

---

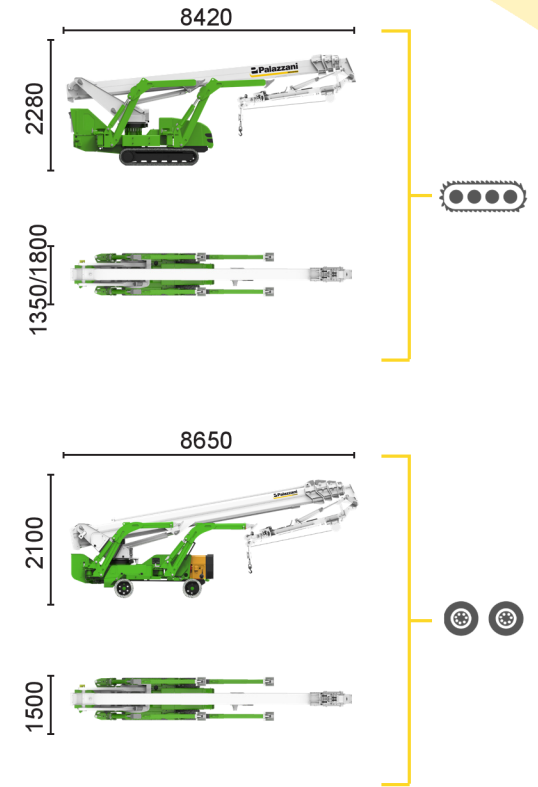
Single-phase Electric motor

---

Lithium iron phosphate battery LiFePO4



500 kg	250 kg
13,5 m	15,2 m



Model	Icon 1	Icon 2	Icon 3	Icon 4	Icon 5	Icon 6	Icon 7	Icon 8	Icon 9	Icon 10	Icon 11	Icon 12	Icon 13	Icon 14	
XTJ 43+/C		41,4 m	15,2 m	500 kg	660°	240x70 cm	90°+80°	3,64-5,23 m	23%	38%	2 km/h	10900 kg	75 kN	3,51 kN/m2	5,39 kN/m2
XTJ 43+/R		41,4 m	15,2 m	500 kg	660°	240x70 cm	90°+80°	3,64-5,23 m	23%	16%	1,4 km/h	10900 kg	75 kN	3,51 kN/m2	5,25 kN/m2

Available power options:

**BI-ENERGY** (DIESEL+AC)

**ECO** (AC+BATTERY)

Characteristics and technical data are informative only and subjected to change without notice.